

# Shiftconnector® Plant Process Management Platform

Connecting humans and technology for safer, smarter, and stronger manufacturing



## Increased operational efficiency. Transparent communications. Better collaboration.

In industrial manufacturing, operational continuity, safety, and efficiency are critical. Shiftconnector by eschbach is a cloud-based platform that empowers frontline teams to digitize shift communication, streamline workflows, and ensure compliance—across all levels of the plant. With Shiftconnector, your teams gain a centralized, real-time collaboration hub that connects people, processes, and data—ensuring nothing is lost between shifts and every decision is backed by insight.

### Key Capabilities

**Shift Handover**—Replace paper logs and spreadsheets with digital, auditable records that ensure seamless communication and accountability.

**Event and Incident Logging**—Capture production events, safety incidents, and deviations in real time, with full traceability.

**Searchable Database**—Provides out-of-the box and customizable tools to quickly and easily find relevant historical information, in support of daily troubleshooting.

➤ Embed traditional forms from documents and spreadsheets into Shiftconnector

Bypass Scoping - Bypass Log Reference Number			
Bypass (Tag / Equipment Number)	Reason for Bypass	Bypass Installation (How, where and why is the bypass being installed)	
Risk Assessment Complete, Attached, and Rapid Response Informed?	YES / NO (circle)	Risk Assessment only required if Bypass is "Non-Routine"	

Refer to 2000-HS-PRO-0028 Bypassing Safety Controls Procedure for the required approvals.

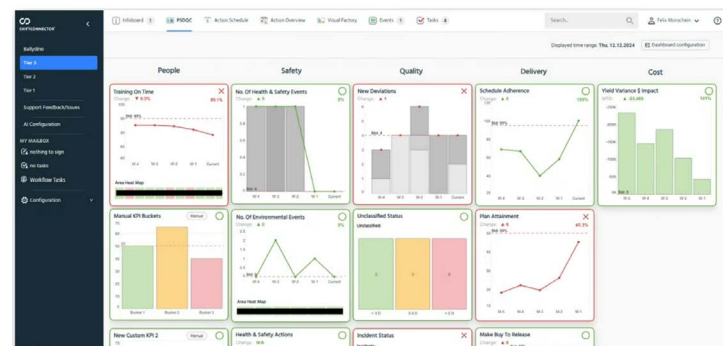
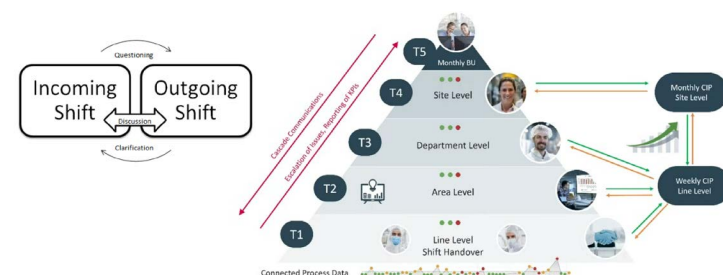
Bypass Approval - For Fire/Gas detectors, blinding Safety valves or disconnecting Safety Instruments, or Emergency/Fire water <sup>h</sup>			
Approver's Printed Name	Approver's Position	Approver's Signature <sup>h</sup>	Date / Time
	Production Team Leader		
	Rapid Response Team Leader		
	Production Superintendent		
	Production Manager/CSU Manager		

**KPI Tracking & Performance Transparency**—Monitor key performance metrics such as OEE, downtime, and quality—visualized in real time to support continuous improvement.

**Manufacturing Efficiency**—Identify bottlenecks, reduce unplanned downtime, and optimize workflows with data-driven insights and cross-shift visibility.

**Task Management**—Allows for initiation and tracking of both Tasks and Work Orders, creating a much higher level of awareness and accountability.

➤ Enable critical exchange of information between shifts, escalate issues, and report KPIs in Tier Collaboration Dashboards



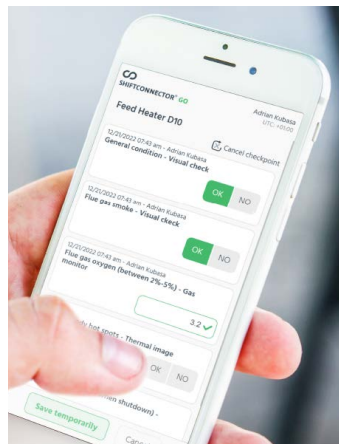
## Key Capabilities (Continued)

**Mobile Operations with Shiftconnector® GO**—Empower field operators with access to logs, tasks, and forms—enabling real-time updates, faster response times, and better decision-making on the move.

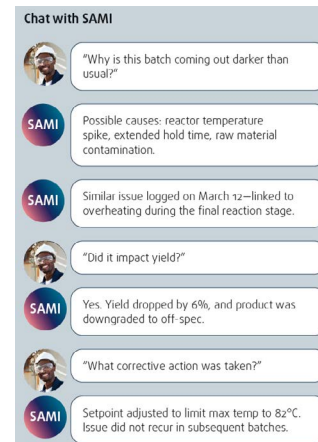
**AI-Powered Insights**—Use SAMI® (Shiftconnector Artificial Manufacturing Intelligence) to detect patterns, predict anomalies, and surface actionable recommendations—helping teams make smarter decisions faster.

**Compliance and Audit Readiness**—Maintain a complete, time-stamped operational history to meet industry regulations and internal standards.

### Shiftconnector® GO



### SAMI® Chat



## Trusted by Global Manufacturers

Shiftconnector is trusted by global leaders in manufacturing, energy, and utilities to:

- Improve safety and reduce downtime
- Enhance transparency and accountability
- Support lean manufacturing and continuous improvement initiatives

## Customer Success Story

A leading fertilizer manufacturer struggled with manual workflows, limited data access, and inefficient cross-department communication. The plant partnered with Adatafy to digitize shift operations using Shiftconnector and Shiftconnector GO. The result:

- Faster incident response
- Improved compliance documentation
- Stronger collaboration between operations and maintenance

“Shiftconnector has become the backbone of our shift communication. It’s replaced our paper-based processes with an easy-to-use, all-in-one digital platform.”

— Plant Operations Manager

## Why Partner with Us?

As a Shiftconnector Solution Partner, we offer:

- **Tailored Implementation**—Customized to your plant’s workflows and compliance needs
- **Expert Training & Support**—From onboarding to optimization
- **Industry Insight**—Deep understanding of industrial manufacturing challenges

## Let’s Build a Safer, Smarter Plant Together

Contact us today to schedule a personalized demo and see how Shiftconnector will benefit your operations.